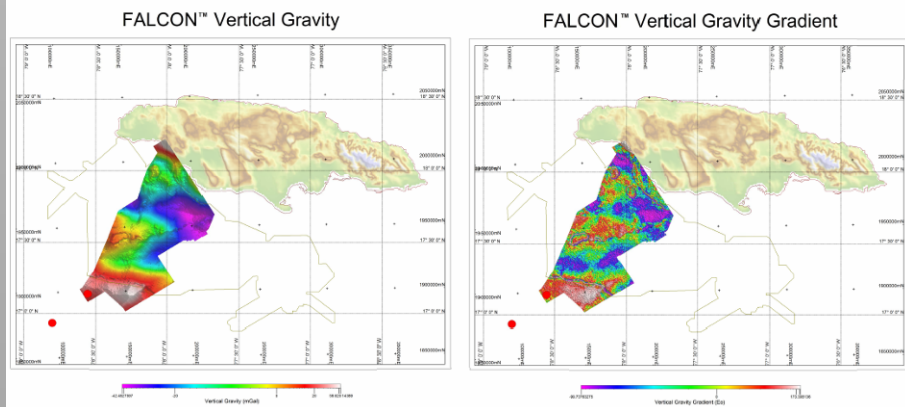


Source

- Hydrocarbon shows in 10 of the 11 wells drilled in Jamaica
- A 739m Eocene oil prone source interval (HI above 500) was cored in Content-1 and is mature offshore Walton Basin
- Seeps and shows onshore, source rocks and typed oil extracts indicate three active petroleum systems from Eocene to Early Cretaceous

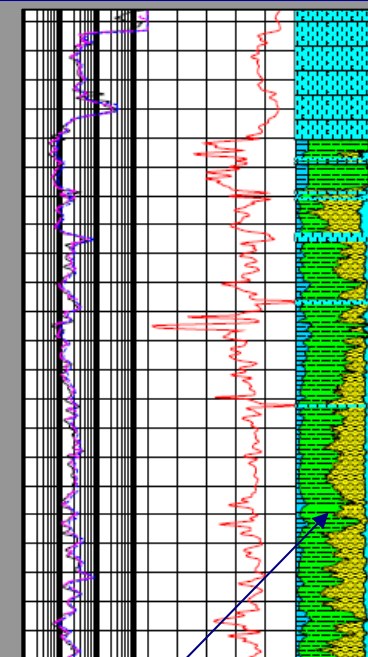


Exploration Status

- Approx 14,300km² of under explored permits available for farmout
- 6,968km of new 2D seismic data and 23,974km of FALCON® airborne gravity gradiometry data acquired in 2006

Reservoir

- Cretaceous clastics and reefal carbonates
- All observed in wells and outcrop
- Eocene clastics delta 23% porosity
- Eocene reefs

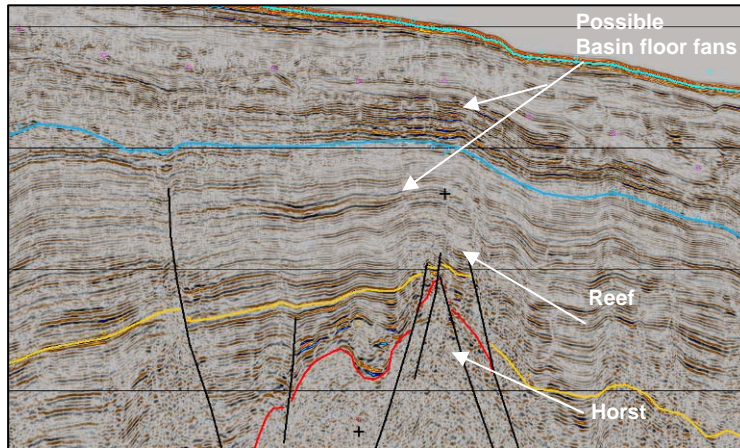
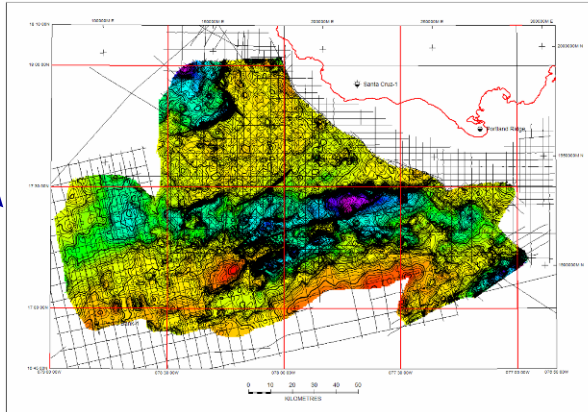


Lower Eocene clastics in Arawak-1

Trap

- Many large structural features have been mapped, and numerous smaller features have been identified
- Basin floor fans with AVO response are observed on the data

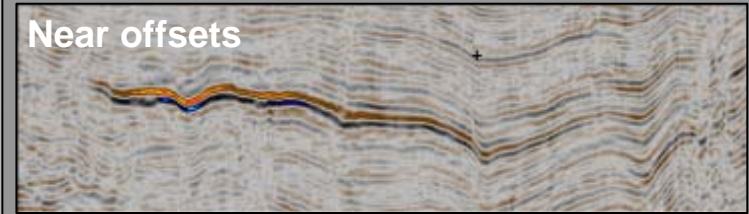
Near Base Tertiary



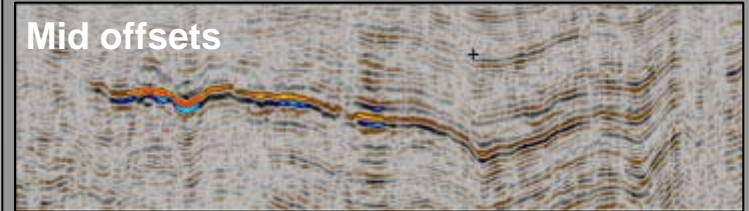
New 2D Seismic Data

WB06-123

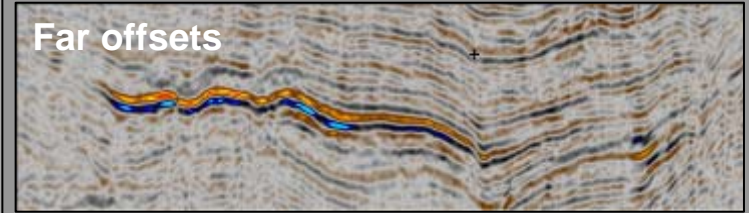
Near offsets



Mid offsets



Far offsets



Farmout Commencing May 2007

Register your interest for this opportunity with either:

Cathy Norman (GOP)
Tel: +61 3 9909 7609
cath.norman@gop.com.au

Jan Ostby (Finder Exp)
Tel: +61 8 9420 6068
j.ostby@finderexp.com